

Finishing Binding - Seamed Joining of Ends

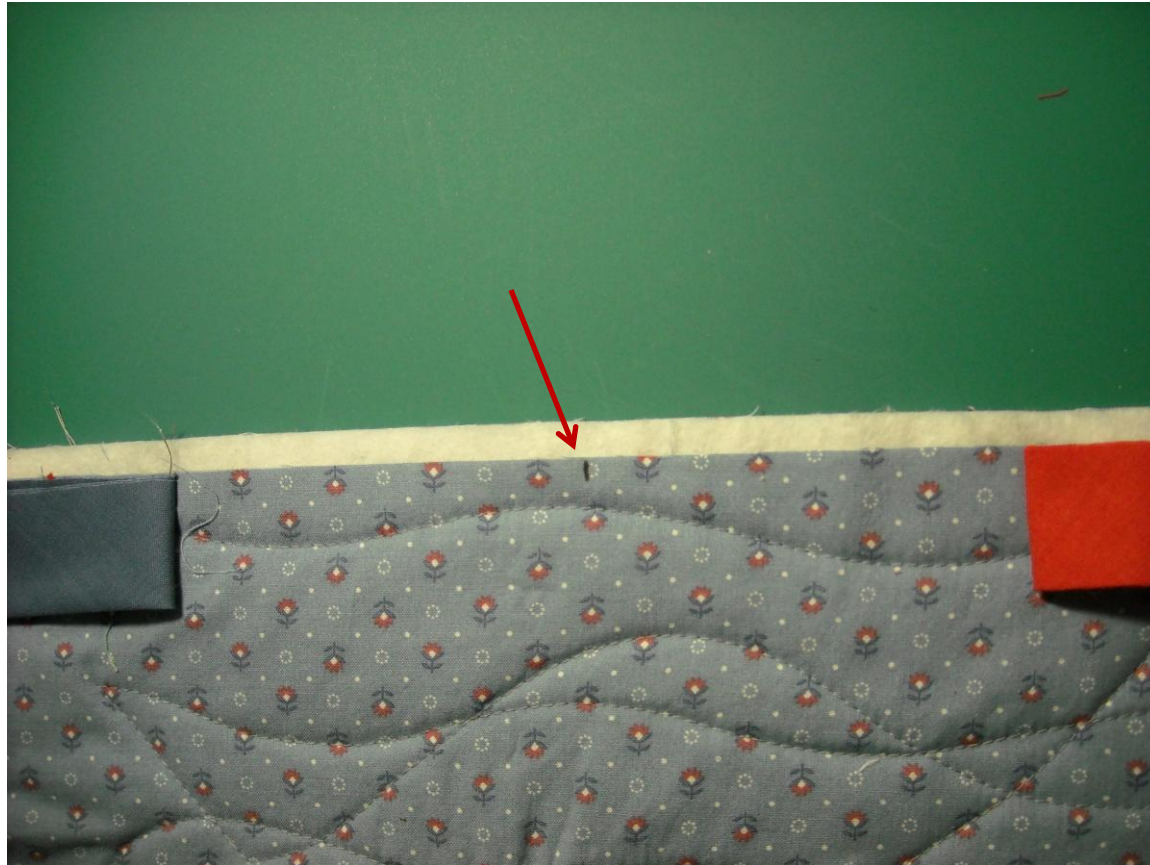
Beginning to End



The finished product. This technique will join the start and end of your binding with a diagonal seam that looks just like a diagonal seam used to join your binding pieces together.



Begin by attaching your binding leaving at least an 8-inch tail at the beginning(orange end). Measure back (to the left) 8 inches from your stitch starting point to mark your stopping point. Sew your binding all the way around stopping at your end mark. Leave at least an 8-inch tail at the end (blue end).



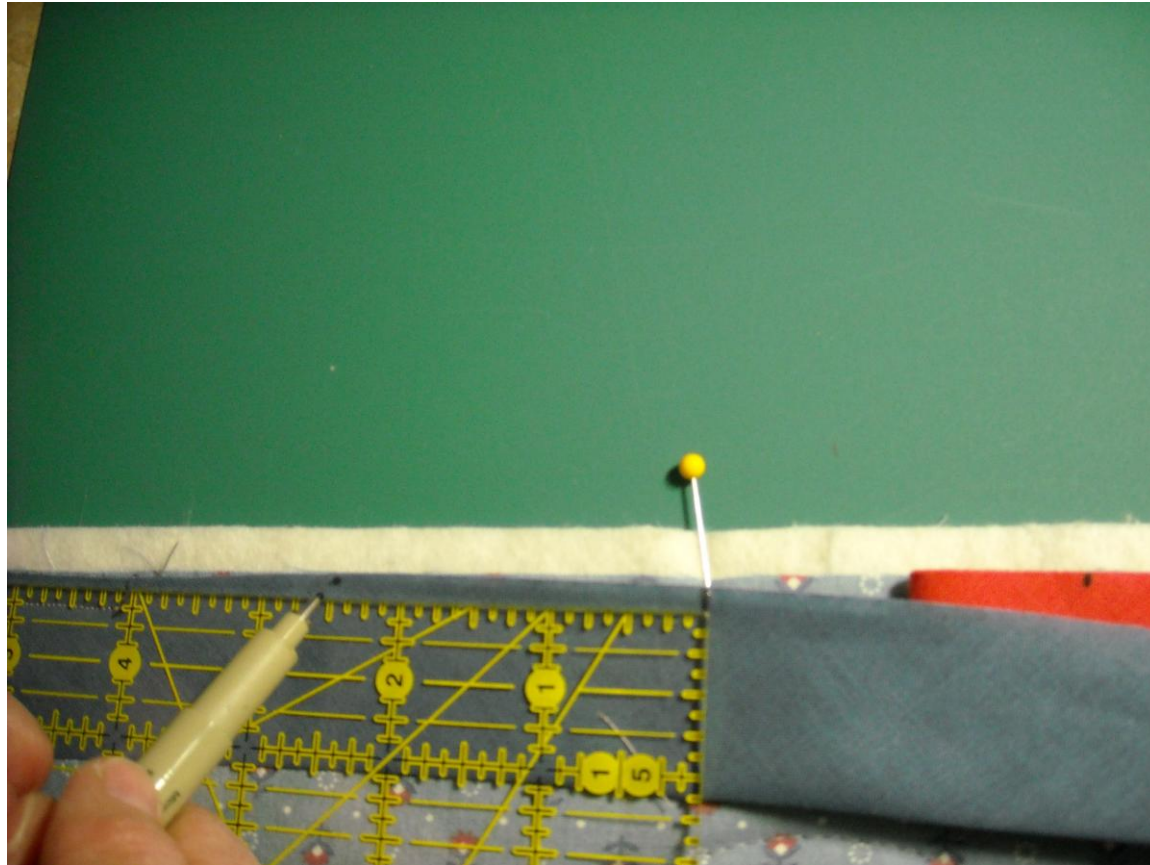
Mark the center point between the 2 sewn ends, 4 inches from each end should be the center.



Place a mark on each tail 4 inches from the sewn point matching the center point on the quilt top. Left tail shown here

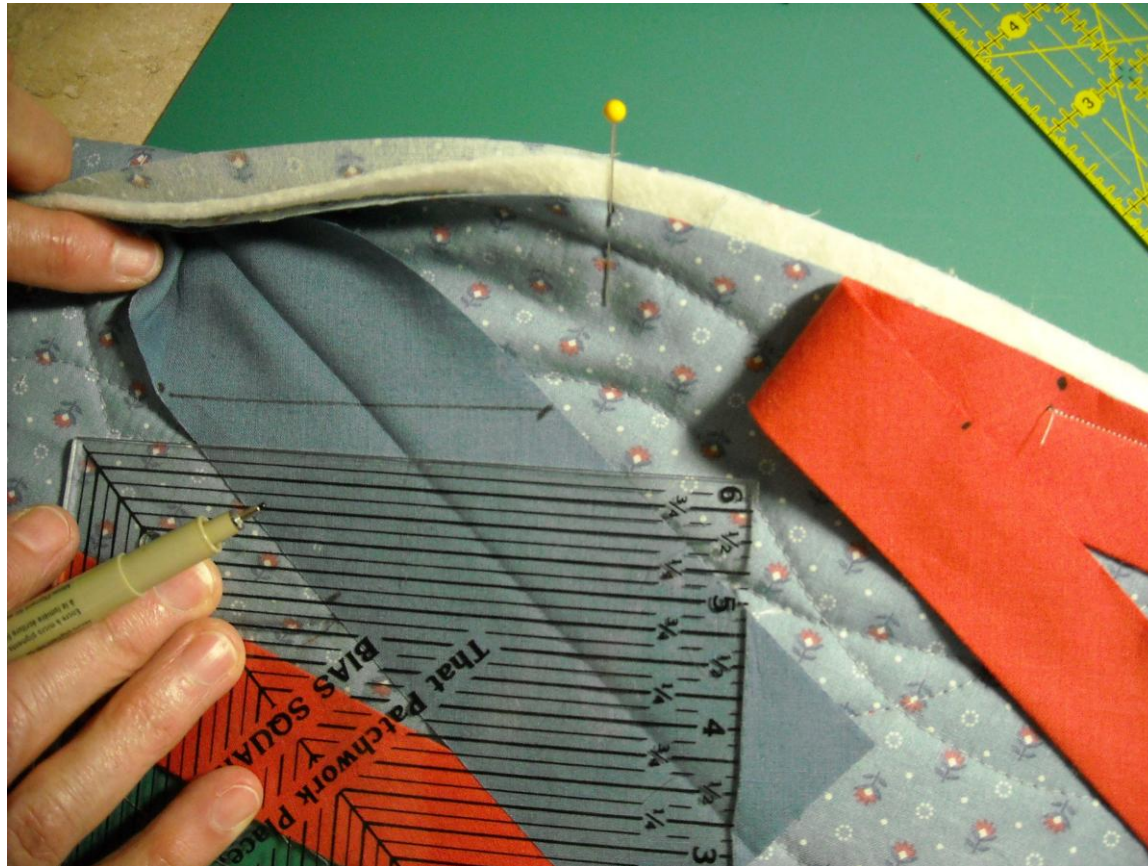


Mark center point, 4 inches from sewn point on right tail.

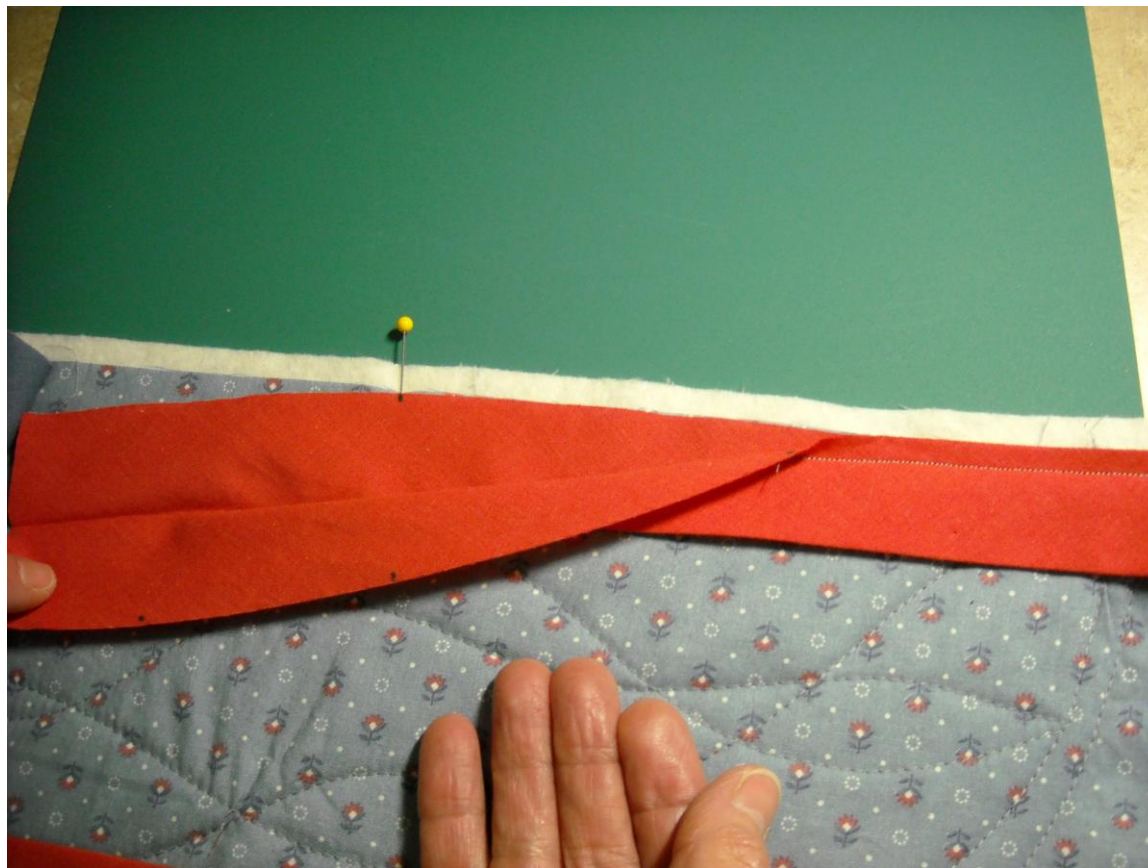


On the left tail, mark a point to left of center mark equal to the full width of the binding. If your binding strips are 2 inches, your mark would be 2 inches to the left of the center mark. If the strip is $2\frac{1}{2}$ as shown above, measure $2\frac{1}{2}$ left of the center mark.

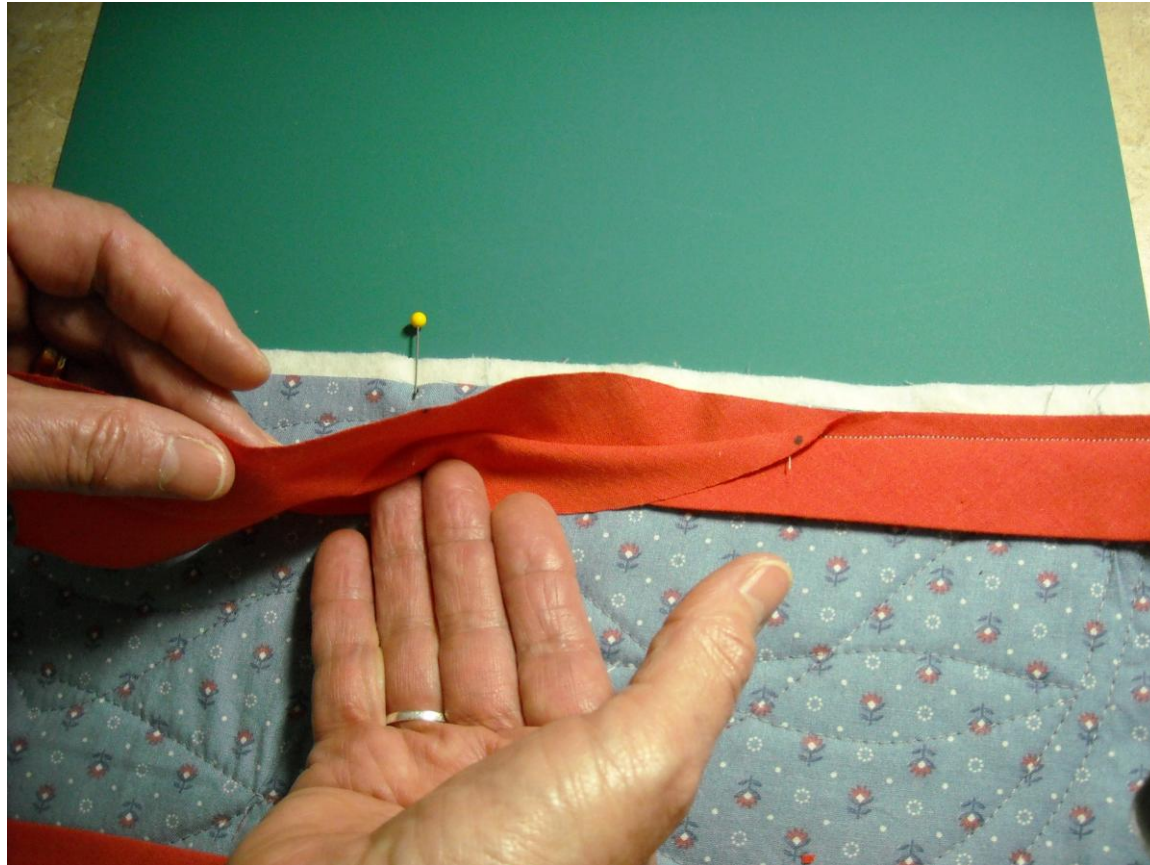
Repeat on the right tail measuring to the right of the center mark.



On the left tail, open the binding strip with the wrong side up and draw a line starting at the top from the center point mark down and left to the 2nd mark you just made. This will be a 45 degree angle. This will be your stitching line.



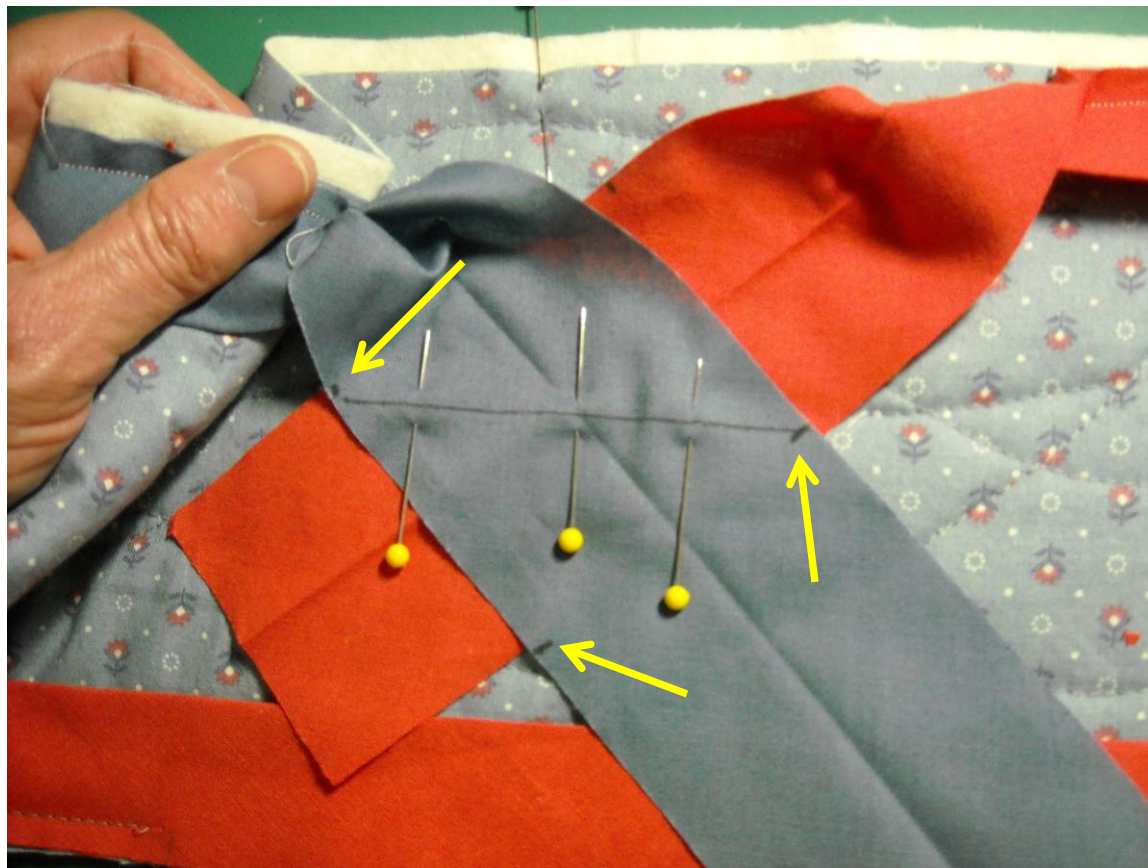
Open the right tail so that the wrong side is up.



Turn or roll the binding tail over with the top edge coming toward you. See next slide



Continue to turn until the right side of the binding is facing up.
You will need to transfer your center and secondary marks to
this side of the fabric.



Cross the left tail over the right at right angles and with right sides together matching the center line and secondary marks and pin.

This will require that you bunch or fold up your quilt top between the two sewn ends.



Stitch along diagonal line.

You may want to first pin along diagonal line and open up to be sure that when stitched it will be correct.



Trim excess leaving a $\frac{1}{4}$ inch seam allowance.



Finger press the seam open.



Refold binding and lay flat along quilt top edge. The length of the binding should be the same as the length of the remaining space along the edge of the quilt top.

Finish stitching the binding to the quilt top.