

Quilter's Unlimited of Tallahassee

Around the Block

Volume 31, Issue 9

www.quilttallahassee.com

September 2014

2013-2014 Officers

President:

Michelle Hackmeyer

President-Elect:

Karen Skinner

Membership Vice President:

Laura Keller

Secretary:

Wanda Crowe

Treasurer:

Cheryl Gratt

Committee & Activity

Chairpersons

Audio/Visual: Betty Rinkel

Audit: Stephanie Guttman

Block Raffle: Martha Tilden

Challenge '14: Deon Lewis

City Hall Quilt Show:

Jeanne Brenner

Door Prizes:

Pam Doffek & Linda Brooks

Helping Hands:

Roberta Granville

Historian: Open

Hospitality: To be determined

Library: Shirley Shields

Museum Quilt Show:

Dawn Griffin

Newsletter: Vickie Hooks

Opportunity Quilt '14:

Linda Dozier

Opportunity Quilt '15:

Betty Rinkel

Philanthropic: Karen Kuntz

Programs: Geni Rains

Publicity: Open

Show 'n' Tell: Hatty Pennie

Silent Auction:

Penny Blaszczyk

Sit 'n' Stitch Coordinator:

Marsha Walper

Sunshine: Kathleen Turner

Trip Coordinator: Joy Vo

Web Master: Jennifer Moore

Workshops: Barbara Wiggins

City Hall Show: Vacant til

2015

President's Message

Once again the Challenge Quilt participants have come through with astounding creations. I'm always amazed at how different people can take the same theme and basic rules and produced quilts that are completely different. And I must say I'm a little intimidated by what they do. I've listened to them talk about their inspiration and their creative process and it just isn't in me. The thought of trying to come up with some kind of original design takes more effort than I'm willing to expend, I have enough trouble just deciding on fabric colors!. But I enjoy the quilt making I do and am happy with my work. And that's what's so great about this hobby. The degree of complexity and level of originality you put into a quilt are infinite. You can work within your comfort zone and still create something lovely and useful, but then when you feel the urge to step outside that zone, there are lots of techniques and local experts to help you. So, get busy quilting and have some fun doing it!

Michele Hackmeyer, President

Sew many quilts, sew little time!

Dates To Remember

August 28, 2014 – Steering Committee Meeting

August 30, 2014 – End of LeMoyne Show

September 11, 2014 – Museum Show Opening Reception (substitute for Guild Meeting)

October 9, 2014 -- Guild Meeting; Program

October 19, 2014 – End of Museum show

October 23, 2014 – possible> Steering Committee Meeting

November 13, 2014 -- Guild Meeting; Program is Lynne Hagmeier of Kansas City Troubles acclaim

November 14 and 15 – Workshops by Lynne Hagmeier

Newsletter Updates: 25th of each month

CAPITAL CITY QUILT SHOW 2014

“Starry, Starry Nights

IMPORTANT DATES

Challenge Quilt Contest:

Thurs 8/14/14 (Guild meeting)

Quilt Drop-off (Museum):

Sat 8/23/14 10:00 am til noon

Opening Night Reception (Museum):

Thurs 9/11/14 5:30-7:30 pm (Guild meeting)

Museum Show:

Friday 9/12/14—Sunday 10/19/14

Silent Auction ends & Opportunity Quilt Drawing

Sun 10/19/14

Quilt Pick Up (Museum):

Sat 10/25/14 10:00 am til noon

Opening Night Reception begins at 5:30 PM. ALL QU members are expected to please bring finger foods. If you feel creative, try to incorporate the theme “Starry Starry Night” into your item. Make sure your serving dish has your name on it and remember to pick up the dish after the reception. Please contact **Margaret Boeth** (RMBT1947@gmail.com) or by calling (850) 508-4800 if you can serve punch and assist with before and during the reception.

***IMPORTANT REQUIRED INFORMATION FOR Quilt Drop-off:**

- **Hanging Sleeve:** a four inch (4”) hanging sleeve must be sewn (not pinned) on the back of the quilt. Make the sleeve 1” shorter on each side of the quilt. Required by museum to enable your quilt to hang evenly.
- **Quilt label:** entry’s title and quilter’s name must be sewn (no pinned) on the back of the quilt or on the inside of the clothing item.
- **Pillowcases:** quilts are to be placed inside a pillow case. The pillowcases will be returned to you with the quilt inside for pickup. Make sure your name is on the pillowcase.

Everyone who has a quilt hanging in the show is asked to volunteer two (2) hours for each quilt hanging in the show. Sign-up sheets for volunteers will be sent around the room at the next few QU meetings, or you can contact **Dawn Griffin** (850) 509-6103 / Griffindd@aol.com

****RECEPTION - IMPORTANT INFORMATION FOR QUILTERS WHO HAVE A QUILT IN THE SHOW (does not apply to show and tell items):**

- **During Opening Night Reception:** Please plan to wear your **Quilted/Handmade Name Tag** and arrive before 5:30 PM. We would like you to be recognized as a participant in this year’s show. If you are attending the reception and after the ribbon cutting ceremony, you will be asked to stand by your quilt for about 20-30 minutes so you can share your masterpiece with the public and answer any questions. If you have more than one item in the show, please select the one you want to share the most! Call Dawn Griffin as she needs 2 people to assist with this.
Dawn Griffin

Do you EQ? New EQ Sit-n-Stitch!

EQ is Electric Quilt software, which many quilters use to design quilt blocks and even whole quilts on the computer. It is now also available for Mac computers!

If you already enjoy using EQ, are new to the software, or just want to learn more about it, this is a great chance to get together with other quilters and explore the possibilities EQ offers. Find out more about EQ at <http://electricquilt.com>

Those interested in joining the new EQ Sit-n-Stitch will decide where, when, and how often the group will meet.

Please contact Marsha Walper, Sit-n-Stitch Coordinator, to join the new EQ Sit-n-Stitch.

Starry, Starry Night Challenge Wrap Up

Twenty-six challenge quilts were displayed at the August 14 QU meeting. Members voted, and the results were: 1st Place - Marsha Walper's - "Dreaming of Stars", 2nd – Cynthia Seyler - "Shine On" and 3rd – Sharon Christiansen - "Stairway to Starry Nights". Equally lovely quilts were made by Stephanie Guttman, Shirley Holder, Janet Hughes, Judith Lawrence, Jennifer Moore, Hattie Pennie, Sharon Pollock, Geni Rains, Betty Rinkel, Bob Rubanowice, Stephanie Robanowice, Susan Skornia, Rachel Smith, Martha Tilden, Kathleen Turner, Judy Walker, Ester Weiner, Cheryl Willis, Leslie Cohen, Lyn Gearity, Patricia Penick, and Christine Walsh.

Congratulations to all who made quilts and thanks to those who contributed to the prizes. We all learned new things in the challenge process and we'll see all of the quilts again in the "museum" show.

Deon Lewis, 2014 Challenge Chairperson

Needed – Committee Chairperson

Now that the 2014 Bylaws revision has been adopted, the Guild needs a 2015 Chairperson for the Welcoming Committee. The duties are quite simple. The Committee is to "arrange for greeters, who shall personally welcome and assist visitors and new members at each monthly meeting." If you are interested, please contact President-Elect Karen Skinner at vipres@quiltallahassee.com, at the meeting, or by calling her (see directory for phone number).

Upcoming Programs

September 11, 2014 Meeting at – **Museum Show Opening Reception** (substitute for Guild Meeting)

*****Mark your Calendars*****

Jacksonville QuiltFest Bus Trip -

Saturday, September 27

"It's Not All Black and White"

Cost per person is \$30.00 (Bus Transportation \$20 + \$10 Show admission)

Don't miss this great opportunity to join your QU friends for a fun day trip! Come along and be inspired by beautiful quilts and enjoy some great "quilty" shopping!

Make your commitment soon! **See Joy Vo or send her a check by mail.

SEPT. CHANGE OF PLANS FOR FABRIC SQUARE EXCHANGE PARTICIPANTS

Because we are not going to have our regular monthly meeting in September, due to the opening night reception of the quilt show at the museum, we will not be exchanging fabric squares in September.

I realize that many of you have probably already purchased your fabric, and maybe even cut it into squares, so I would like your thoughts about possibly making the September exchange at the January 2015 meeting, extending the program for one month. That way we can all use the fabrics that have been purchased, and still have the opportunity to share September's fabrics with others, only at a later date. If you have any thoughts about this, please email me at chery1522@comcast.net, or call me at 878-5751, or Elizabeth at [1-352-359-1017](tel:1-352-359-1017) and give us your thoughts or ideas.

So, unless most of you are in agreement to waiting until January to make the September exchange, we will not be exchanging fabrics for September, since it already takes a significant amount of our time to exchange out the fabrics for one month, we would prefer not to have to handle two months at once. Thanks for helping us have a productive Square Exchange thus far this year, and we look forward to your thoughts.

Cheryl Willis

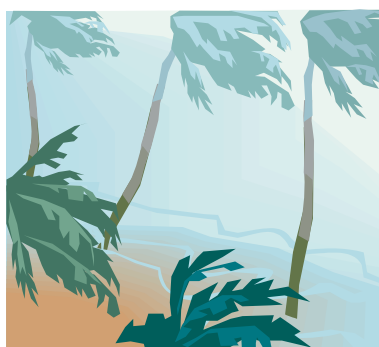
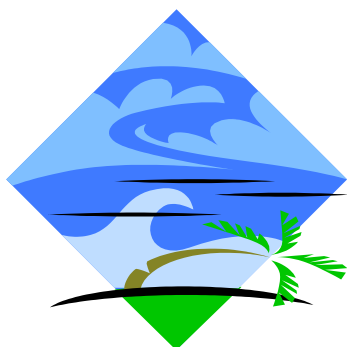
Block of the Month

Note: Due to the Museum Show Opening being held on the September QU meeting night, we will draw for both the September and the October block of the month at the October QU meeting.

September Block

Purple Rain and Hurricanes

Stephanie Guttman created this easy block called, Purple Rain and Hurricanes. Use corals, lavenders, yellows or any other color that inspires you on a pale blue background. Perhaps if we all make a hurricane block, we can avoid the real deal in this peak of hurricane season! Bring your completed block to the October meeting for a chance to win.

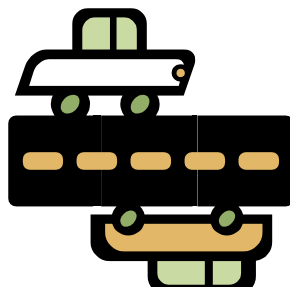
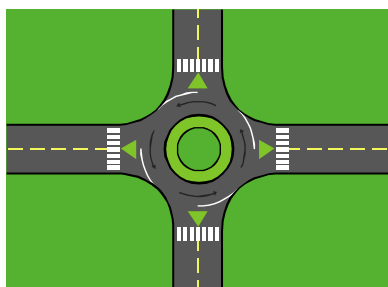


October Block

U. S. 1

U.S.1 was created by Marsha Walper, who she shared her technique of paper piecing at the August meeting. If you find that method too intimidating, simply add quarter inch seams and piece in the traditional method. Create your road with black and two shades of green on a light blue background. Bring your block to the October meeting and you just may win enough road blocks to reach from Maine to Key West!

Instructions for both blocks can be found on the QU website. Feel free to contact Martha Tilden or Wendy Stone if you have any questions.



Sit-N-Stitch Groups

A "Sit-n-Stitch" is a group of members who meet weekly, biweekly or sometimes once a month. Some groups meet in a member's home on a rotating basis and work on their own individual project. Some groups meet at a specified location and work on a service project. We have several of both of these types of groups in our guild.

If you are interested, please call Marsha Walper .

Monday	Tuesday	Wednesday	Thursday	Friday	Saturday
Big Bend Hospice	Sew for Hope	Crazy Quilters	Sew Arty	Thimble Buddies *	Sew for Hope
1-3 pm Virginia Lewis	2nd Tuesday 1-4:30 pm Cynthia Seyler	Monticello Library 1-4 pm Barbara Sheats	3rd Thursday 11:30 am-1:30 pm Kathleen Turner	2nd Friday 9:30 -1:30am Wendy Stone	1st Saturday 9:30am-1pm Cynthia Seyler
The Quilting Bees	McQuilters	Pin Pals *	Patchwork & Prayer	Quilts 'n Books	2nd Saturday
Senior Center 1-4 pm	Ronald McDonald 1-3 pm Carol Harrison	1st & 3rd Wed. 1-3 pm Linda Steans	1st, 3rd, & 4th Thurs. 6:30-8:30 pm Janice Parker	Panera, T'ville rd. 4th Friday 10 am	9 am-4 pm Connie Beane
Southwood Stitchers			Southern Comfort 'Sew'sciety *		Havana Sit'n Stitch
Southwood Comm. Room 10:00-3:00 pm Nancy O'Rouke * Sit-n-Stitch at full capacity			1st, 3rd, & 4th Thurs. 7-9 pm Esther Weiner Appliqué Addicts NE Branch Library, Thomasville Rd 3rd Thurs. 5:30 - 7:45 pm Mary C. Scott		4th Sat. 1 pm Martha Mitchell

Small/Medium/Long-arm Machine Quilter's group

Contact: Karen Skinner (see directory for contact details)

The group is open to both (1) machine and/or frame owners; and (2) those who are interested in acquiring the machines/frames. New members are welcome!

Next Meeting: This group is on hiatus until Fall. Please refer to the Bulletin on the Guild's website, or the Newsletter for updates. In the meantime, feel free to contact us if you have questions or wish to be put on the group's e-mail distribution list.

WORKSHOPS

Lynne Hagmeier will be here in November!

Are you taking advantage of summer and enjoying the beach, pool or other outside activities. Or, are you staying inside with the A/C blowing while you piece and quilt? While you are enjoying your choice of activities, plan on attending the Guild's fall workshop with Lynne Hagmeier. She will be here for the November meeting with workshops following on Friday and Saturday. Yes, we've had "issues" with getting her samples here. At the August meeting, we'll have a quilt made by one of our members using one of Lynne's patterns and her fabric. I'll have a pillow top using one of her patterns using some batiks, just so you can have a visual of a different color way using her neat layered quilting technique.

The workshop dates are November 14 and 15. The cost is \$60 each. Those of you participating in the "Invest in yourself program" should have enough to cover the cost of the class. Keep investing in yourself and socking those dollars away, \$2.50 a week. By November, with enough in your investment account to have paid for your class, you'll be able to purchase Lynne's newest book, or one of her rulers, or some of her fabric. "Layers of Love" is the title of Lynne's newest book, due out anytime. Sign up for the classes on line with PayPal. A PayPal account is not required as you can pay with a credit/debit card on PayPal. Or, mail me a check. My new, updated address is in the notice Laura gave out at the July meeting. Or pay me directly at the August QU meeting.

Speaking of investing in yourself, I encourage you to continue with the program. You'll be ready for next year's workshops with no shock or surprise at the cost of the workshops. You'll be ready. Remember, "if Momma ain't happy, nobody's happy and if Grandma ain't happy, well look out." Let's keep ourselves happy, educated, and enlightened.

2015 WORKSHOPS

April will have Suzanne from Suzanne's Quilt Shop in Moultrie, GA speaking at our monthly meeting and teaching the workshop classes. She's promised something new and special for us which will be announced later this year.

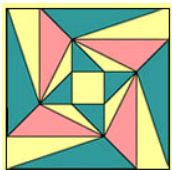
November will bring Becky Goldsmith from Piece O Cake to Tallahassee. Her workshops will be on two different types of Appliqué. Class titles will be announced at a later date

2016 WORKSHOPS

In May, Karen K. Stone will return to Tallahassee. She has some new quilts in her own fantastic style. I seen pictures of some of them and look forward to seeing them "up close and personal". Those of you who remember her visit with us several years ago know she is entertaining, knowledgeable and eager to share her knowledge and techniques.

For Fall of 2016, I am attempting to get one of the current premier, award winning, and interesting quilters to come to Tallahassee. As results are available, I will make the announcement.

Workshops are held at Timberlane Church of Christ (where we have our Guild meetings) from 9 AM to 3 PM. Since the class begins at 9, please arrive with your sewing gear around 8:30 so you can be set up and ready to begin at 9 AM. It is suggested you brown bag lunch as lunch time can be brief. If you would like to bring a treat or good thing to eat and share with the group, these are always enjoyed, and appreciated. The Guild provides coffee in the morning. Water and ice are available at the Church. Barbara Wiggins



Quilter's Unlimited

Quilters Unlimited of Tallahassee
P.O. Box 4324
Tallahassee, FL 32315-4324
qutlhnews@gmail.com

Submit Info for Newsletter

**The deadline for newsletter
submissions is**

25th of the Month

**Please submit materials via
email at
qutlhnews@gmail.com**